

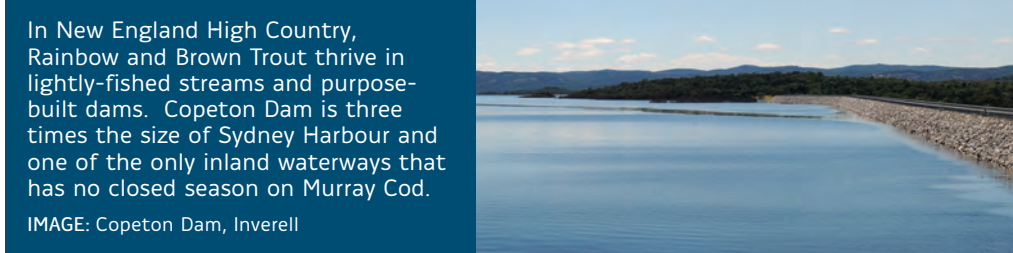
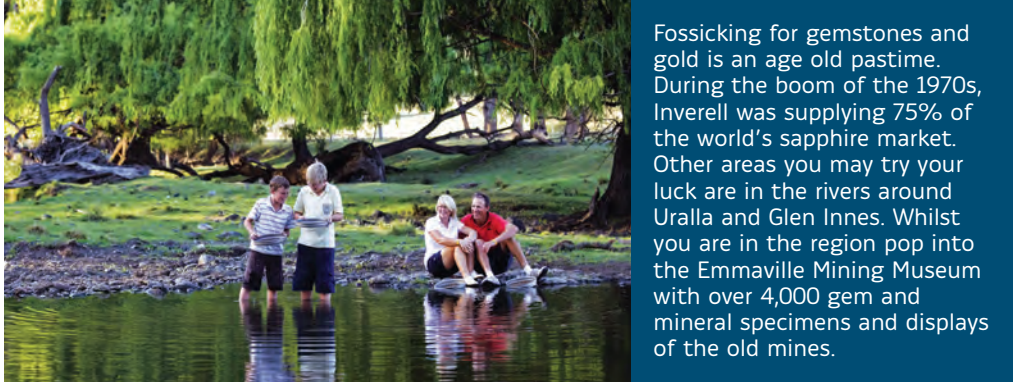
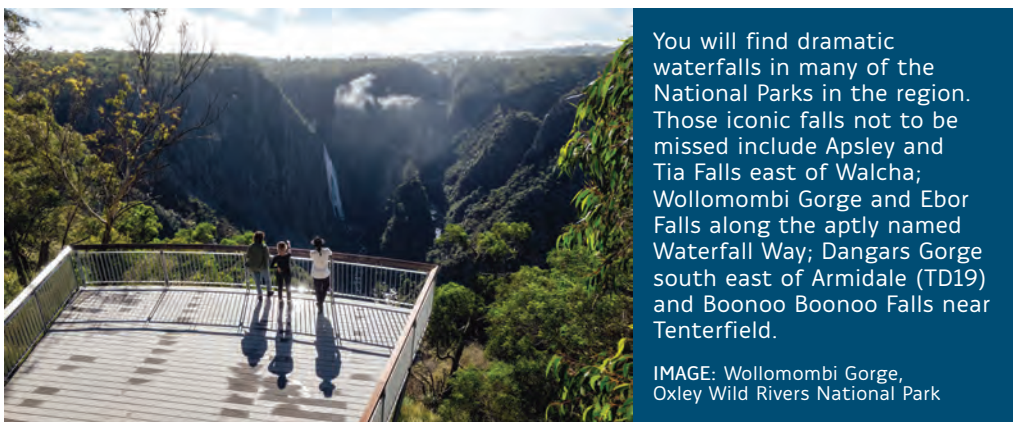


REGIONAL MAP GUIDE

[f @newenglandhighcountry](#) [@nehighcountry](#) [newenglandhighcountry.com.au](#)

## natural wonders

New England High Country - where you can climb giant rock formations, stroll through rainforests, watch powerful waterfalls and find endless breathtaking views.



## inverell

- National Transport Museum**  
Discover over 100 years of transport in Australia with exhibits from around the nation. The museum is home to over 120 vintage, veteran and classic cars and motorcycles.
- Inverell Pioneer Village**  
From the moment you walk through the magnificent gateway of the Pioneer Village, you immediately sense the history that surrounds you. The authentic buildings of the village represent the lifestyle and pioneering spirit of our forebears.
- Copeton Dam**  
Copeton dam is a fisherman's paradise being one of two inland waterways in NSW with no closed season on Murray Cod. Many come chasing these massive metre long plus monsters with great success. The area is tranquil and the perfect place to set up camp whilst resetting and getting back to nature.
- Blair Athol Day Spa**  
Inspired by the Roman Bathhouses of the past the Day Spa houses a 10.5 m mineral-rich pool and a 6- person spa (filled with artesian spring water and rain water). Massage suites, sauna, beautiful views, beverages and delicious homemade food are just some of what makes for an incredible experience.
- Fossicking**  
Come and fossick for the magnificent deep blue sapphires that Inverell is famous for. There are options for complete beginners and seasoned fossickers. Crystals and other gems and minerals are available too. Don't miss a chance to take a part of the Sapphire City home with you.

Inverell Visitor Information Centre  
13-35 Campbell Street, Inverell 2360

02. 6728 8161  
tourism@inverell.nsw.gov.au



Tia Falls, Oxley Wild Rivers National Park

## be inspired



Saints Mary and Josephs Cathedral, Armidale

New England High Country straddles the Great Dividing Range in north eastern NSW. Its capital, Armidale, is located halfway between Sydney and Brisbane and 2 hours from the coast.

The heritage-steeped High Country is bursting at the seams with charming country towns, natural wonders and gourmet attractions, not to mention big open roads that reveal the region's beautiful scenery at every turn.

Starting at around 1000 metres above sea level, New England High Country offers visitors a truly evocative and unique experience with four distinct seasons. The city of Armidale and the towns of Glen Innes, Guyra, Inverell, Tenterfield, Uralla and Walcha share a rich history and stunning natural environment.



Bald Rock by Viewing Australia

## tenterfield

- Bald Rock**  
Climb the largest exposed granite monolith in the southern hemisphere and be rewarded with awe inspiring 360° views over the surrounding bushland. Tenterfield is home to five other National Parks, including Boonoo Boonoo, Koreelah, Torrington, Tootoom and Basket Swamp.
- Tenterfield Saddler**  
Operated as a saddlery for over 100 years and immortalised by Tenterfield-born Aussie entertainment legend, Peter Allen, through his well-known song 'Tenterfield Saddler'. The saddlery was no stranger to famous faces, with iconic Australian bush poet and author, Banjo Patterson, being a regular visitor during his time in Tenterfield in the early 1900s.
- Explore Tenterfield's Rich History and Heritage**  
Visit the Sir Henry Parkes School of Arts Museum, Tenterfield Railway Museum and Centenary Cottage. Tip: download the Soundtrails app and listen to stories of a bygone era while exploring the history of this Federation town (allow approx. 1 hour).
- Mount Mackenzie Drive and Lookout**  
Marvel at Granite Country formations, Doctors Nose, Little Bald Rock and Draining Rock. Pack a picnic to enjoy at Mount Mackenzie Lookout.
- Boutique Shops, Cafés, Restaurants and Country Pubs**  
Taste your way around the region as you discover local food, wine, beer and other delicacies. Discover streets lined with boutique shops full of inspiring homewares and antiques.

visittenterfield.com.au



Uralla, McCrossin's Mill Museum

## uralla

- McCrossin's Mill Museum and Function Centre**  
This award winning museum will keep you fascinated for hours, whether you're interested in Captain Thunderbolt, early machinery, history of local gold mining or Ned Trickett - Australia's first world champion in any sport (rowing).
- Fossick for Gold**  
Try your luck panning for gold at the Woolridge Recreation and Fossicking Reserve, or visit the Rock Hunter's Rendezvous Gemstone Collection at the Visitor Information Centre.
- Heritage Walk, Soundtrail & Aniwun Cultural Collection**  
Explore historic Uralla - listen to local characters and stories as you walk around town, exploring the past and enjoying the present. Call into the Visitor Information Centre to view rare and ancient artefacts and stories in the Aniwun Cultural Collection.
- Dangars Falls, Lagoons and Bird Watching**  
Natural beauty is a key signature of the New England High Country. Short walks, long tracks and bird watching are all readily accessible. Call in to the Visitor Information Centre for maps and assistance.
- Breweries, Wineries, Distilleries and Eateries**  
There is something for everyone; award winning Dobsons Distillery, New England Brewing Co. Sample some fresh goat cheese from Sunhill Dairy, seasonal fruit from Greenhills Orchard (est.1865) or explore the many cafés, bakeries, pubs and restaurants.

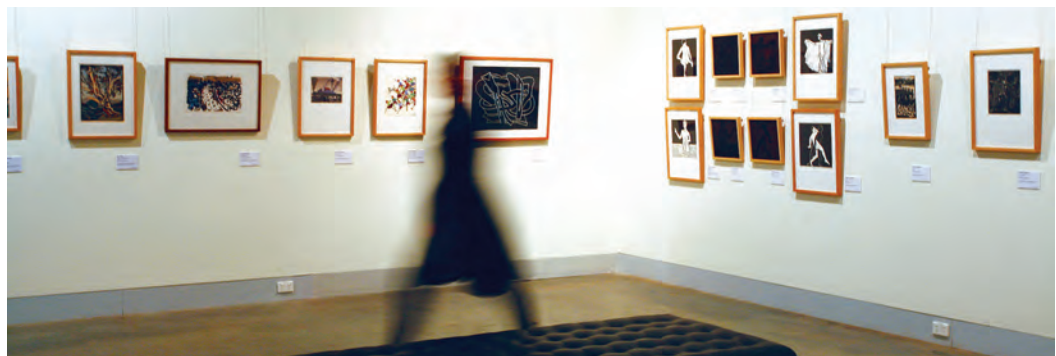
Uralla Visitor Information Centre  
104 Bridge Street Uralla NSW 2358

02. 6775 6400  
visit@uralla.com

## culture, heritage, arts

Experience the fascinating and diverse heritage, arts and culture offering of New England High Country. Award winning art galleries, bespoke museums, antique shops and quaint bookstores wait to be discovered.

- Discover culture, history and nature by downloading the **Soundtrails App** and immersing yourself in the stories of your surroundings. Soundtrails truly brings our towns and national parks to life through original compositions, local voices, and world class production.
- Explore **Walcha's Open Air Gallery** of sculpture and public art by renowned artists and take a step back in time at the **Walcha Pioneer Cottage and Museum**.
- McCrossin's Mill Museum** in Uralla houses an eclectic collection of early Australian memorabilia. This award winning museum will delight visitors of all ages.
- Whilst in Armidale plan a visit to historic **Saumarez Homestead**, **The Aboriginal Cultural Centre** and the **New England Regional Art Museum**. Don't forget to book a seat on the Armidale Heritage Bus Tour.
- Inverell's Pioneer Village & National Transport Museum** are both guaranteed to transport you back in time. For a special experience see a master wood turner at work in **New England Wood Turning** and view the range of Australian made Diggerdoods and Oddgerdoods in their gallery.
- Get lost in time at the **Land of the Beards History House Museum**, boasting over 10,000 items showcasing Glen Innes' history, or visit **Gawura Gallery** the home of internationally acclaimed Aboriginal Artist Lloyd Gawura Hornsby.
- Visit the **Tenterfield Saddler**, immortalised in song by Peter Allen. Discover local artisans at **Make it Tenterfield** and the **Artists' Collective Studio**.
- And finally for a true country experience pop in to a **local boutique gallery**, meet the artists, and maybe find a fabulous memento of your holiday!



New England Regional Art Museum, Armidale



Walcha's Open Air Gallery

New England High Country boasts an extensive gorge wilderness with magnificent waterfalls, rainforests and exotic flora and fauna. You can climb giant rock formations, stroll through rainforests, watch powerful waterfalls, camp in the wilderness and find endless breathtaking views. This is all part of the New England High Country experience and what's more it is accessible to old and young alike.

When it comes to discovering things to do in New England High Country, the possibilities for adventure and new experiences are endless. Visit an eclectic array of art galleries and museums; rediscover a land rich in history; gracious cathedrals and stately buildings. Explore the region at a leisurely pace and discover inspiring stories of the earliest Aboriginal inhabitants, European explorers, Chinese gold diggers, bushrangers and generations of pastoralists.

Perhaps the best way to experience this region is just to indulge in an old fashioned road trip, from Walcha in the south to Tenterfield in the north, there is so much to see and do - we invite you to come up and visit!



Thunderbolt's Grave, Uralla  
PHOTOGRAPHER: Simon Scott



Australian Standing Stones

## glen innes

- World Heritage Gibraltar Range and Washpool National Parks**  
An outdoor adventurer's dream with combined 80km of scenic trails great for hiking, mountain biking, birdwatching, kayaking and canoeing.
- Australian Standing Stones**  
The national monument honouring Celtic people, past and present. The calendar formation of the stones marks the change of seasons and the site is home to many celebrations throughout the year including the Australian Celtic Festival in May.
- Scenic Country Drive**  
Take Tourist Drive 11, a picturesque loop through prime New England farmland from Glen Innes passing through the smaller historic villages of Emmaville and Deepwater.
- Take a Heritage Walk**  
Walk with history and gaze upon over 60 magnificent heritage buildings in the township of Glen Innes. Pick up your brochure from the Glen Innes Visitor Information Centre or download it from the website at [gleninneshighlands.com](#)
- Boutique Shopping and Country Hospitality**  
Glen Innes is home to a range of boutique stores, cafés, restaurants and pubs that showcase the best of our local produce with warm and welcoming hospitality.

Glen Innes Visitor Information Centre  
192 Church Street, Glen Innes NSW 2370

02. 6730 2400  
tourism@gic.nsw.gov.au



## armidale

- Waterfall Way (TD17)**  
Within a 1 hours drive from Armidale you can experience spectacular gorges, waterfalls and World Heritage National Parks including Oxley Wild Rivers, Cathedral Rock, Guy Fawkes and the New England National Park.
- New England Regional Art Museum**  
A leading arts tourism destination in regional NSW with a \$42 million collection of over 5000 works of historical, modern and contemporary art.
- Saumarez Homestead**  
Take a guided tour through the White family's 30 room Edwardian mansion followed by a stroll through the expansive gardens including the magnificent heritage rose garden.
- Armidale Heritage Bus Tour**  
A lively 2 1/2 hour taster tour of Armidale incorporating some of Armidale's finest heritage buildings; the New England Regional Art Museum; The Aboriginal Cultural Centre and Booloominbah. The tour departs from the Visitor Information Centre. Bookings Essential 02 6770 3888.
- Art, Wineries and Waterfalls**  
Tourist Drive 19 is a very pleasant scenic drive encompassing the New England Regional Art Museum, Aboriginal Cultural Centre, Petersons Winery, Dangars Gorge and the village of Uralla.

Armidale Visitor Information Centre  
65 Marsh Street Armidale NSW 2350

02. 6770 3888  
tourism@armidale.nsw.gov.au



Open Air Gallery

## walcha

- Apsley Falls, Oxley Wild Rivers National Park**  
The awe-inspiring Apsley Falls are one of the must-see and most accessible waterfalls in the New England region, located just 19 kms east of Walcha. Suitable for all vehicles and caravans, with an all sealed access, the magnitude of the gorge with its impressive sheer faced cliffs is truly breathtaking.
- Walcha's Open Air Gallery**  
A gallery of permanent sculpture by renowned local, national and international artists. Walcha's Open Air Gallery is a crowd-pleaser in the Australian art scene. A brochure and map are available at [walchanow.com.au](#) or Walcha Information Centre.
- Walcha Sculpture Soundtrail**  
Complementing the Open Air Gallery of sculptures and artworks. This highly original sound walk takes you into the heart of the towns Open Air Gallery with stories from contributing artists, local indigenous identities and other people in the community. Download the Soundtrails App or visit [www.soundtrails.com.au](#)
- Tia Falls, Oxley Wild Rivers National Park**  
The spectacular Tia Falls cascade down the face of the gorge in two main drops. Both visible from the one lookout a short walk (650m) from the carpark. Explore a little further to be rewarded with a different aspect of the gorge; open, vast and spectacular scenery.
- Boutique Shops, Cafés, Country Pubs and a rich history & Heritage**  
Discover Walcha's beautiful historical buildings and all that lies within them. Take a step back in time at the Pioneer Cottage and Museum Complex (open weekends or by appointment).

Walcha Visitor Information Centre  
29w Fitzroy Street, Walcha NSW 2354

02. 6774 2460  
tourism@walcha.nsw.gov.au



Budds Mare, Oxley Wild Rivers National Park



Coombadja Creek, Washpool National Park



Tenterfield Railway Museum  
PHOTOGRAPHER: Fay Pampling

## road trip adventures

The journey to New England High Country promises to be one full of surprises, natural wonders and awe inspiring views. Whether you are arriving on motorbike, RV, towing a caravan or in a classic car, you will be able to experience arguably some of the most scenic drives in Australia.

- Waterfall Way**  
The 185km **Waterfall Way** is one of the world's most breathtaking drives. The Waterfall Way promises a journey of wonder and amazement as you follow the flow of the water as it travels from the historic city of Armidale through five national parks until it arrives at the pristine beaches of the Coffs Coast. There are ancient Gondwana Forests, sweeping valleys, dramatic gorges and of course, lots of waterfalls. If short on time don't miss Wollomombi Gorge, Point Lookout, Ebor Falls and Dorrigo National Park.
- Thunderbolts Way**  
Entering New England High Country from the south via Walcha, **Thunderbolts Way** tops the list for its wide-open vistas of rolling farmland. Running from Gloucester in the pretty hinterland of the Mid-North Coast to Inverell on the QLD/NSW border, this 290km odyssey weaves over the Great Diving Range, climbs to 1400m and provides spectacular scenery at every turn.



Ebor Falls, Guy Fawkes River National Park



## Gwydir Highway

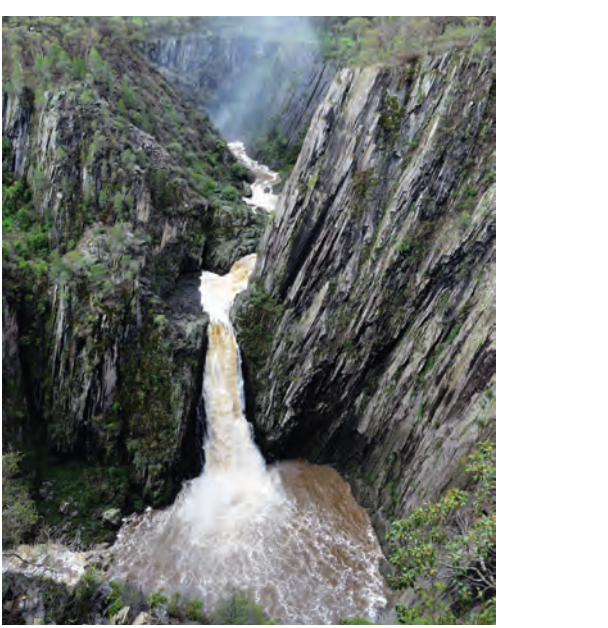
**Gwydir Highway** stretches from Grafton on the coast to Glen Innes and Inverell, where national park leads to national park covering an area of some 92,400 hectares. Highlights include Washpool National Park and Raspberry Lookout, which has extensive views across the gorge country.



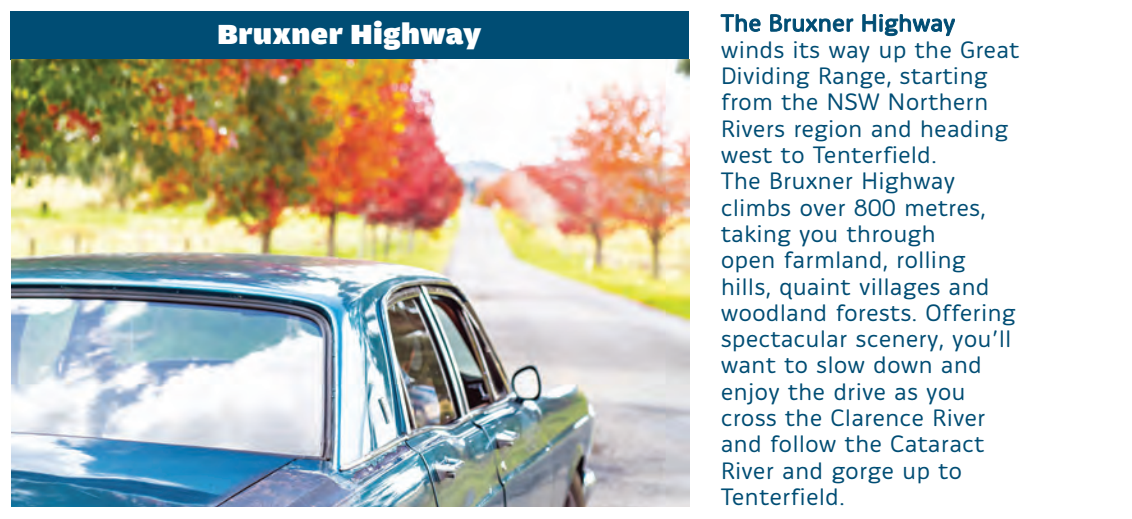
Gibraltar Range National Park

## Oxley Highway

**The Oxley Highway**, from Port Macquarie to Walcha, is possibly the most famous and favoured motorcycling route in Australia. Enjoyed by cars alike, its meandering bends guide you through incredible World Heritage listed National Parks and picturesque farmland. Be sure to stop off and visit the breathtaking Apsley Falls and Tia Falls along the way.



Apsley Falls, Oxley Wild Rivers National Park



## Brunxer Highway

**The Brunxer Highway** winds its way up the Great Dividing Range, starting from the NSW Northern Rivers region and heading west to Tenterfield. The Brunxer Highway climbs over 800 metres, taking you through open farmland, rolling hills, quaint villages and woodland forests. Offering spectacular scenery, you'll want to slow down and enjoy the drive as you cross the Clarence River and follow the Cataract River and gorge up to Tenterfield.

## distilleries, wineries, breweries

New England High Country boasts some of the best artisan beers, boutique spirits and cool climate wines. Follow the picturesque roads and enjoy a bounty of delicious locally-grown produce and award winning wines, beers and spirits. There are local delights to be discovered in many of the towns and villages.



Armidale  
Petersons Armidale Winery, Welders Dog Brewery, Great Hops Brewing Co

Inverell  
Toppers Mountain Wines

Tenterfield  
Reedy Creek Estate, Brunxer's Run Winery, 2 Wild Souls Meadery, Splitters Swamp Vineyard



Glen Innes  
Deepwater Brewing, Glen Gowrie Distillery

Uralla  
New England Brewing, Dobson's Distillery



